

Wedge wire 120° DSM screens and centrifuge baskets for the starch industry

PROGRESS SCREENS® provides custom-made Pro-SLOT® screens, baskets and filter elements for starch extraction in corn, potato and tapioca wet milling processes.

✓ Precise fiber separation with 50 µm slot opening

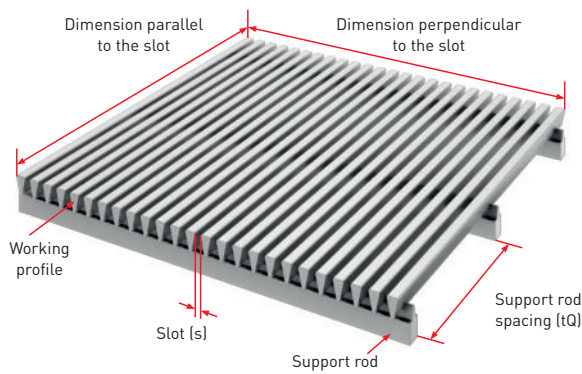
✓ Low maintenance costs due to high durability

✓ Non-clogging surfaces improving efficiency

CORE APPLICATIONS:

- Germ dewatering
- Fiber washing
- Starch extraction
- Starch slurry separation

Wedge wire 120° DSM screens and centrifuge baskets for the starch industry



Pro-Slot® wedge wire screens

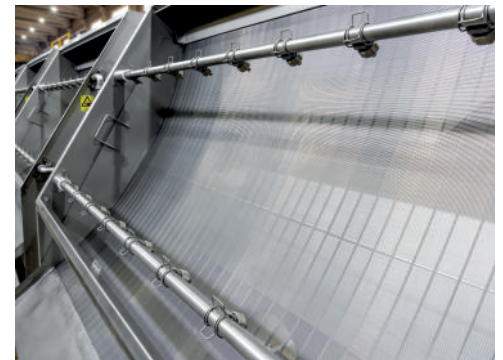
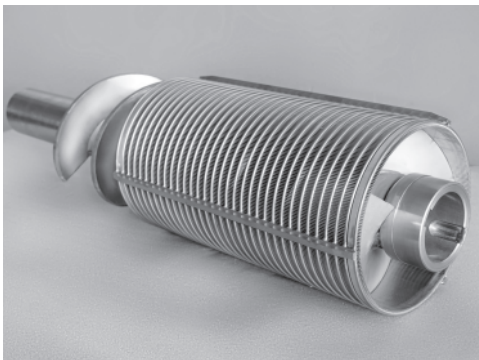
Wedge wire screens are made by electric resistance welding machines. Specially profiled working wires are welded to support bars at an angle of 90 degrees. Thanks to using the latest technology and fully automatic electric resistance welding machines, we manufacture screens with very precise slot size.

The use of PROGRESS SCREENS Pro-SLOT® wedge wire screens in conjunction with the appropriate technical solutions increases the efficiency of starch production processes. Pro-SLOT® wedge wire screens can be subjected to pickling and passivation processes, which maximise corrosion resistance.

Pressure 120° DSM screens for fiber wash process

Precise slot widths are crucial in the manufacturing of starch. That's why all our products undergo the strictest optical control to ensure the tightest slot width tolerances are achieved. The surfaces of our bent screens can be polished to maximise the surface smoothness and quality.

The 120° bent screens (DSM screens) with 50 micron slots are capable of separating the smallest fibres from starch slurry.



Pro-SLOT® wedge wire screens manufacturing & engineering

- 35 years of experience
- Over 260 highly-qualified workers and engineers
- Consulting and project support from the technical department
- Nearly 100 000 custom-made product solutions in a wide variety of industries
- Satisfied customers in over 60 countries on 5 continents
- In-house Research & Development Center
- Fully equipped onsite laboratory
- ISO 9001:2015 Quality Management System confirmed by Lloyd's Register

